

6/18/2008



RESCO EXPLORER 2008

Help Document

Table of Content

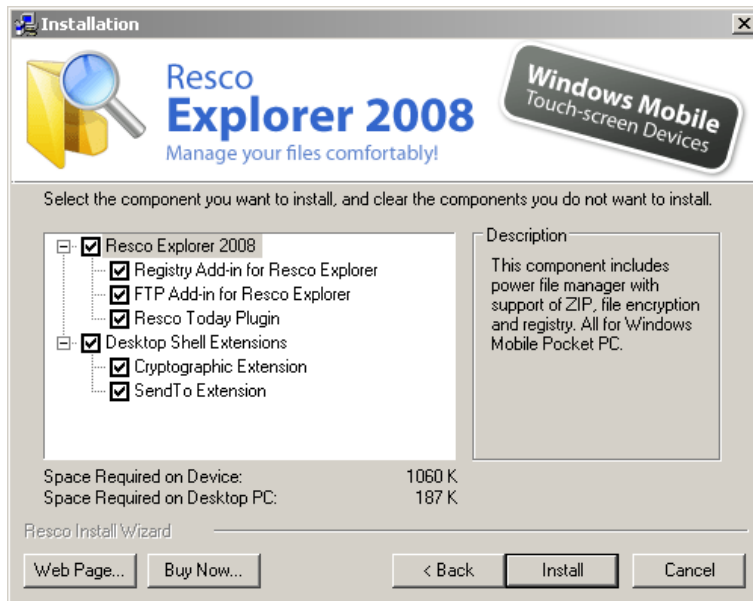
Table of Content.....	2
Getting started	4
Installation	4
Start up settings	4
Requirements.....	5
Desktop (EXE) installation steps.....	5
CAB installation steps	5
Uninstallation	5
Registration.....	6
When registration fails	6
I need a new registration code	6
Files	7
Open Files.....	7
File Operations	7
Searching for files	8
File Compression.....	8
File Encryption	9
Favorites	10
Network.....	11
FTP.....	12
Recycle Bin	13
Registry Editor	14
Virtual Folders	15
Functionality:.....	15
Creating virtual folders.....	15
Today Plugin	16
Settings.....	17
General	17
General Options.....	17
Other Options	17
Browser Options	17
File Settings.....	17
Viewer Settings	17
Add-Ins options	17

Customize options	18
General Options.....	18
Skin Options	18
Listview Options	18
Colors	18
Customize Toolbar	18
Keyboard Shortcuts	18

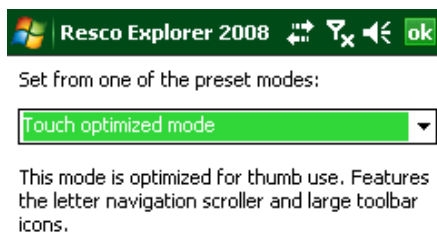
Getting started

Resco Explorer 2008 offers: Today Plugin with “Running application manager”, Network browser, FTP-add in, Registry editor, Virtual Folders, Recycle Bin, Strong file encryption, ZIP compression, Quick search, Built-in viewer, File types highlighting, Customizable startup folder and more ...

Installation



Start up settings



When you start up Resco Explorer 2008 for the first time, you have the option to select the preset mode you want to use.

The modes include:

- **Touch optimized mode**
This mode is optimized for thumb use. Features the letter navigation scroller and large toolbar icons.
- **Standard mode** (list only)
This mode is the same as used in the previous version. Features the list view only and navigation using navigation pad or stylus.
- **Compact mode** (list+tree)
This mode is similar to the standard mode with the addition of the tree view.
- **Custom mode**
This mode leaves the settings unchanged. Settings can be changed in Menu>Options>Customize. This mode is intended for advanced users.

Requirements

- Pocket PC 2000/2002, Windows Mobile 2003 (SE) based Pocket PC, Windows Mobile 5.0 and Windows Mobile 6.x, Classic and Professional
- Microsoft ActiveSync 3.6 or later (for desktop installation only)
- 1.5 MB free memory in device

Desktop (EXE) installation steps

- Download appropriate installation file ([rescoexplorer_p.exe](#))
- Insert your device into the cradle and check if ActiveSync is connected
- Run executable file you just downloaded to start installation.
- Select components you want to install
- Resco Explorer 2007 for Pocket PC — main application
- **Registry Add-in** —registry editor
- **FTP Add-in** —FTP client for your device
- **Resco Today Plugin** —shows the battery/memory status and your favorite applications on the today screen
- **Desktop Shell Extensions** — Desktop application that enables context menu encryption or decryption of files on your desktop and an easy [**Send To**] command (send files from desktop PC to your device)

CAB installation steps

- Download appropriate installation CAB file (Each component must be installed separately):
- [rescoexplorer_p.ARM.CAB](#) (main application)
- [registrymui_p.arm.cab](#) (Registry Add-in)
- [ftpaddinmui_p.arm.cab](#) (FTP Add-in)
- [retodaymui_p.arm.cab](#) (Today Plugin)
- Insert your device into the cradle and check if ActiveSync is connected
- Copy the cab file into your device (using ActiveSync Explorer)
- Run the cab file on your device.

Uninstallation

Use the common uninstallation procedure.

Go to “**Start › Settings › System tab › Remove programs**”, then select Resco Explorer (Plugins must be uninstalled in the same manner) and tap on [**Remove**]

Registration

Resco Explorer 2008 comes with a free 7-day trial. The trial version offers full functionality, except it stops working after 7 days. After the expiration you have to either purchase the unlock key or install a trial of a higher version.

Once you have purchased the full product, you will receive the unlock code that will allow unlimited use of the purchased version of the product. You will also be entitled to free upgrades within one year from the date of the purchase. The prolongation for the next year costs 50% of the product's actual price.

- Tap “**Menu** > **Options** > **Registration...**” (old type devices File > Registration)
- This takes you to the registration screen
- [**Owner**] field is already filled with name of device's owner. Please note that this must be exactly same as owner name you received from our registration center.
- If the field is empty or it doesn't correspond the **Owner** name you entered to the purchasing form go to "**Start>Settings>Owner information**" and fill in the **Name** field.
- Into the [**Code**] field enter your registration code as you received it from our registration center.
- Tap enter or the [**OK**] button.

When registration fails

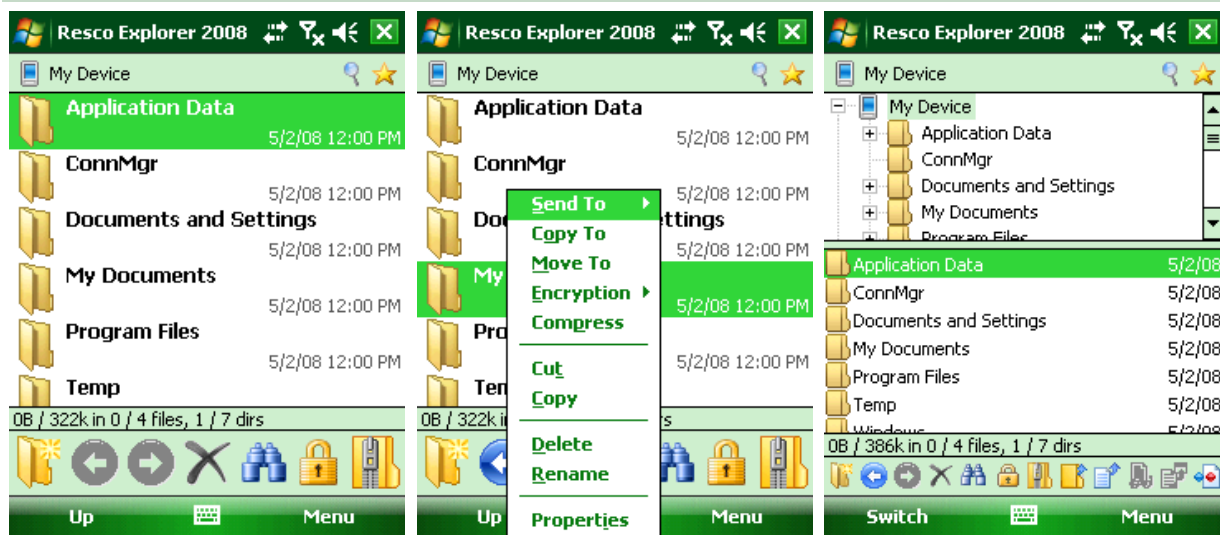
- Make sure owner name matches exactly name you sent to our registration center. Owner name is case sensitive.
- Use default keyboard when typing
- Do not use any spaces inside your name
- Contact our support centre at support@resco.net

I need a new registration code

All legal users have the opportunity to download updated versions and get registration codes for free during the 1st year from the purchase date. Later, you can take advantage of a 50% discount for the next year's updates.

Retrieve registration code: **www.resco.net/regcode.asp**.

Files



Open Files

Tap a file to open it using the associated application

By tapping and holding stylus on the file you bring up a popup menu.

- Tapping **Open** > **Open** opens the file using associated application
- Tapping **Open** > **Open with** opens menu of all applications where you can choose the one to open the file with.
- Tapping **View...** opens the file using the built-in viewer.

The built-in Viewer can be used to view files in TXT, BIN or HEX format, as well as JPEG, GIF, BMP and PNG graphic formats

By checking Always use this program to open this file type you associate this file type with this application.

File Operations

Copying, Moving files and Creation of shortcuts

- select the source files or folders (you can use **Multi-selection Mode** in the “**Menu** > **Edit**”)
- display the popup menu by tapping and holding the stylus on these files.
- select **Copy** or **Cut**
- select the destination folder
- display the popup menu in this folder and choose **Paste** or **Paste Shortcut**

Deleting a file or folder

- Display the popup menu on this file/folder and choose **Delete**.
- Renaming a file or folder
- Select the desired file/folder, display the popup menu and tap Rename.
- Type the new name and press [Enter] on the keyboard.

Creating a new folder

- Locate the folder in which you wish to create a new folder.
- Tap **Menu** > **New Folder**.
- Type the desired name and tap [enter].

Searching for files

Quick search

Start by typing in the name of the file on your keyboard, a small dialog box should appear below the active file window allowing quick search for file names. The cursor jumps to the next file name starting with the letters you typed. By pressing the cursor upwards or downwards, you can jump to the next or previous match. The box is automatically closed when you start another action.

Search for desired file

- select **Menu** > **Find ...** from the menu
- enter the file name (you can use wildcards *;?) and the folder where to search
- press [**Find**]

Find text in files

- select **Menu** > **Find ...** from the menu
- enter the file name (you can use wildcards *;?)
- select **Menu** > **Find text**
- enter the text you are searching for
- press [**Find text**]

File Compression

File compression can be used to increase the storage space of any storage device. Resco Explorer 2007 uses ZIP algorithm that is PC compatible, so you can extract archives created on a desktop PC and vice-versa.

Compression of files

- select the files you want to compress
- display the popup menu by tapping and holding the stylus on the selected files and choose **Compress ...**
- enter the archive name
- select **Menu** > **Set Password...** button if you need to protect your archive
- tap [**OK**] or [**Add**] button

Extraction of files

- select the archive (zip file) you want to extract
- display the popup menu by tapping and holding the stylus on the selected files and choose **ZIP Archive** > **Extract To ...**
- specify the destination folder
- specify the overwrite mode
- tap [**Extract**]

Adding or moving files to an existing archive

- select the files you want to add
- display the popup menu by tapping and holding the stylus on these files
- and tap **Copy** or **Cut**
- select the destination archive or its subfolder
- display the popup menu on this folder and choose **Paste**.

File Encryption

Normally, the following algorithms are installed on your Pocket PC: Base Cryptographic Provider with RC2 (40bit) or DES (56bit). Power users can install an Enhanced Cryptographic Provider (see www.resco.net) with stronger algorithms such as RC2-128bits, DES-56bits, 3DES TWO KEY-112bits, 3DES-168bits.

Encryption of files

- select the files you want encrypt
- display the popup menu by tapping and holding the stylus on the selected files and choose **Encrypt...**
- press [**Settings ...**] if you wish to set the cryptographic provider or encryption algorithm
- type and confirm the password and tap [**Done**]

Decryption of files

- select encrypted files you want to decrypt
- display the popup menu by tapping and holding the stylus and choose **Decrypt...**
- type the password and press [**Done**]

About desktop PC support

You can install a Windows 95/98/NT/2000/XP shell extension during the installation. It allows you to encrypt/decrypt files by using Microsoft File Explorer directly on your desktop PCs.

Favorites



Favorites are folders which you can easily open by tapping the [**Favorites**] icon at the top right side of the screen.

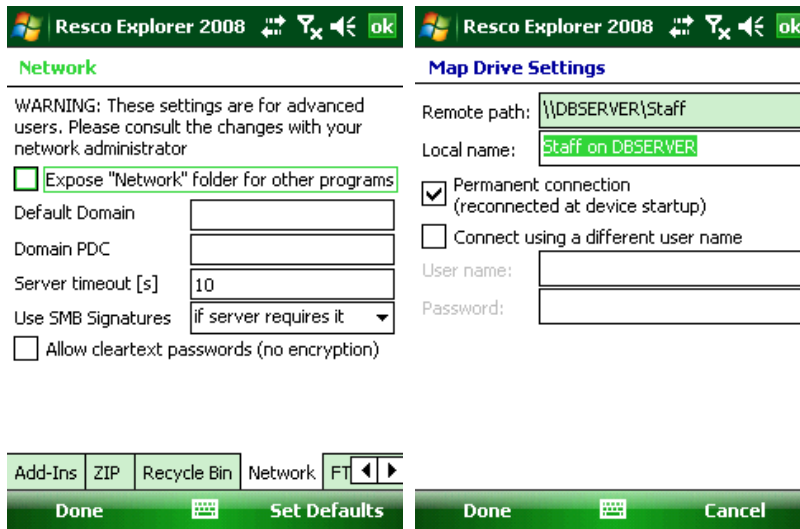
Adding/Deleting favorites

- Select the folder you want to add to the favorites
- tap and hold your finger or stylus on the folder and select “**Send to>Favorites**” menu item
- If you already have the “**Add to Favorites**” toolbar icon you can easily select the folder you want to add and tap on the “**Add to Favorites**” toolbar icon

Deleting favorites

- Tap on the **Favorites** icon in the upper right-hand corner of the screen or tap on the **Favorites** icon on the toolbar and tap on **Edit Favorites**
- Tap and hold on the item you want to delete and tap on **Delete**

Network



In order to access the network you must have a network card. You can't access the network using Active Sync only.

Map a network drive

- press the Network toolbar button and select **Map Drive ...**
- or press Menu > File > Network > Map Drive
- wait while the system searches for network computers
- select the desired computer and display the list of its disks (press [+])
- select the disk you wish to map
- press the [**Share**] button

Unmap a network drive

- press the Network toolbar button and select **Unmap Drive...**
- select the connection you wish to disconnect
- press the [**Disconnect**] button

FTP



FTP Explorer gives the possibility to browse the FTP server's content directly in your Resco Explorer 2007 window by adding the root below the “**My Device**”.

Creation of a new FTP session

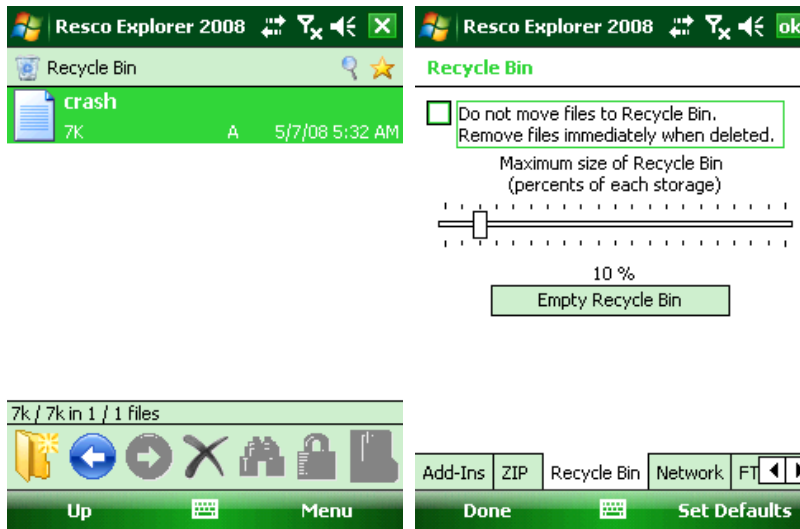
- press **My FTP Locations** at the beginning of root (If your tree does not display registry root, open Option dialog and check “**My FTP locations**” in **Menu > Options > Add-Ins**)
- press New FTP Session...
- specify session details and press **OK**

tap and hold stylus on desired session and in pop-up menu press **connect**

Deleting FTP session

- tap and hold stylus on desired session and in pop-up menu press delete

Recycle Bin



Resco Explorer now moves deleted files into a virtual folder “Recycle Bin” instead of immediate deletion.

Restoring files from Recycle Bin

- press **Recycle Bin** at the beginning of root
- tap and hold stylus on desired file(s) and in pop-up menu press **Restore**

Emptying Recycle Bin (3 options)

- If you have selected Recycle Bin icon in the Tree View tap **Menu** > **Empty Recycle Bin**
- or tap and hold stylus on Recycle Bin icon and in pop-up menu press [**Empty Recycle Bin**] button
- In Menu > Option > Add-Ins... choose [Recycle Bin] tab and press [Empty Recycle Bin] button

Disabling/Enabling Recycle Bin

- In **Menu** > **Options** > **Add-Ins...** choose [Recycle Bin] tab check/uncheck Do not move files to Recycle Bin

Registry Editor

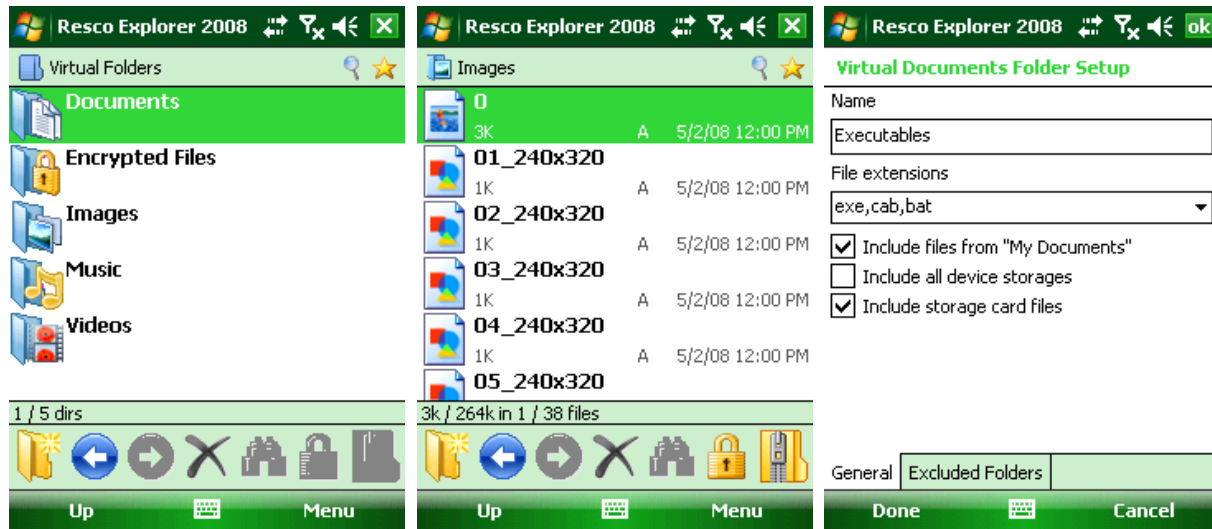


The Registry Editor is for power users only. Deleting or changing some critical keys can cause your device to crash. Use it carefully.

The Registry editor allows you to export, import, view or modify the registry keys.

If your tree do not display registry root, open Option dialog and check “**My Registry**” in “**Menu > Options > Add-Ins**”

Virtual Folders



Functionality:

Virtual folders enable you quick access to the files of the same type e.g. documents, images, music files, videos, encrypted files and other which you can define yourself.

If you open a virtual folder, you will see all the files of the same type from the whole main memory and also from the storage card.

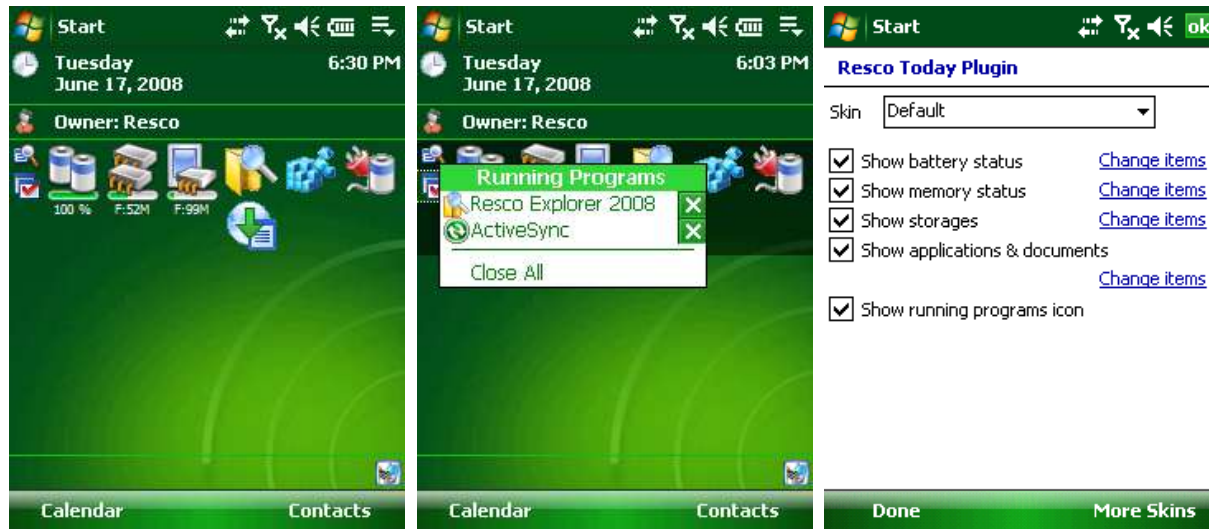
Creating virtual folders

To create a new virtual folder which will show all the files of the type you want it to show, go to the root of the virtual folder, tap on "Menu>New Folder".

Enter the name of the folder in the [Name] field and in the [File extensions] field enter the extensions you want to see in the newly created virtual folder. You can separate the extensions with a coma ",".

To access the virtual folder, tap [Up] until you reach the "Root" folder.

Today Plugin



Functionality:

- Check your battery status and the free storage/memory directly on the Today screen.
- Launch your favorite applications and documents with a single tap.
- Browse the storage card with a single tap.
- Manage running applications with Built-In **Task Manager**
- Get the detailed storage properties.
- Use arrows for smart movement

Settings

- You can access options of the Today Plugin by tapping the small icon in the left corner of the Plugin. Here you can change skins, items in the Today Plugin, or download new skins.

Settings

General

- There are a lot of options you can modify to increase the comfort of usage. To access the option menu tap “**Menu › Options › General...**”

General Options

- Check [**Last opened folder**] if you want to start the application with the last opened folder or specify a concrete folder
- Check [**Specific folder**] if you prefer to start the application with folder you specified in the blue box below. To set which folder to open at start, tap on the [...] blue box and select a folder. The application will now start from this folder.

Other Options

- Check [**Enable folder auto-refresh**] to see any changes made in the folder automatically.
- Check [**Open Folder Shortcut with Resco Explorer**] if you want to create folder shortcuts that will automatically open this application instead of the built-in MS File Explorer.

Browser Options

- With the first option checked you can hide files with the following extensions: .DLL, .CPL, .DRV, .HTP
- Check the [**Hide hidden files**] option if you do not need to access system or hidden files.
- Check [**Hide files in ROM**] if you do not need to view files in ROM
- Check [**Hide folder**] to hide all folders on your device.
- Check [**Hide file extensions**] if you do not want to view the extensions of files
- Please note that hiding files accelerates your work with Explorer, especially if you need to access folders with large amounts of files.

File Settings

- In this option you can specify whether the application shall prompt you to confirm actions such as delete or overwrite before actually performing them.
- You can also choose if the send to operation will copy or move file(s)

Viewer Settings

- Check [**Use internal file viewer**] if you want to view files using the built-in viewer.
- Check [**Use external file viewer**] option if you wish to use a different viewer. To do this you must specify the respective path.
- Check use tap to [**view selected file**] if you wish to view files simply by tapping them with a stylus
- Check use tap to [**open selected files**] if you wish to open files simply by tapping them with a stylus. Files will open in the associated application. Association can be created using the “**Open**” or “**OpenDoc**” method.

Add-Ins options

- To access the option menu tap “**Menu › Options › Add-Ins...**”
- Setup for following Add-ins: ZIP, Recycle Bin, Network, Registry, FTP and File Associations

Customize options

- To access the option menu tap “**Menu › Options › Customize...**”
- Setup for the following: Skin options, List View options, View options, Colors options, Toolbar customization and Keyboard Shortcuts

General Options

- From the top “drop down box” you can quick set from one of the preset modes or you can choose the **Custom mode** and set your preferences
- Check [**Enable Touch Scrolling**] to use touch scrolling.
- Check [**Letter Navigation Scroller**] to enable the letter navigation scroller, which enables you quick access to files which names start with the letter you choose.
- Check [**Auto hide scroller enabled**] if you would like for the scroller to be hidden, but active.
- Check [**Show Treeview**] if you would like for the Treeview to appear in the upper part of the screen.
- Check [**Use vertical windows splitter**] if you would like for the Treeview to appear in the left part of the screen.
- Check [**Double tap activation**] if you would like to open folders and execute files with a double tap.

Skin Options

- Here you can setup which skin to use.
- Set the left soft-key menu to either Up/Switch, Action Popup, Open Menu or View Menu.
- Set the font size and type.

Listview Options

- Set the List View options to either Reports, Small Icons, Large Icons or Details.
- Check [**Striped List Items**] to stripe the folders and files showing (blue or white) for better orientation.

Colors

- Check [**Highlight specific file types**] for specified file types to become highlighted.
- To add a new file type, tap on [+] and enter the extension of the file type to be highlighted.
- To remove a file type, tap on [-].
- To assign a color tap on the file type and then choose a color from the pop-up menu on the right hand side under the [-] box.

Customize Toolbar

- Check or un-check boxes with actions you would like to have on the toolbar.
- You can visualize up to 13 icons on the toolbar.
- Check [**Show Toolbar**] for the toolbar to appear.
- Check [**Large Icons**] to enlarge the icons.
- If you check the [**Large Icons**] checkbox, you might notice that some checked icons are disabled.
- This is because the toolbar's width is limited and only 7 icons can be visible on the toolbar in the large Icons mode.

Keyboard Shortcuts

- You can map the hardware buttons behavior and assign various action shortcuts.